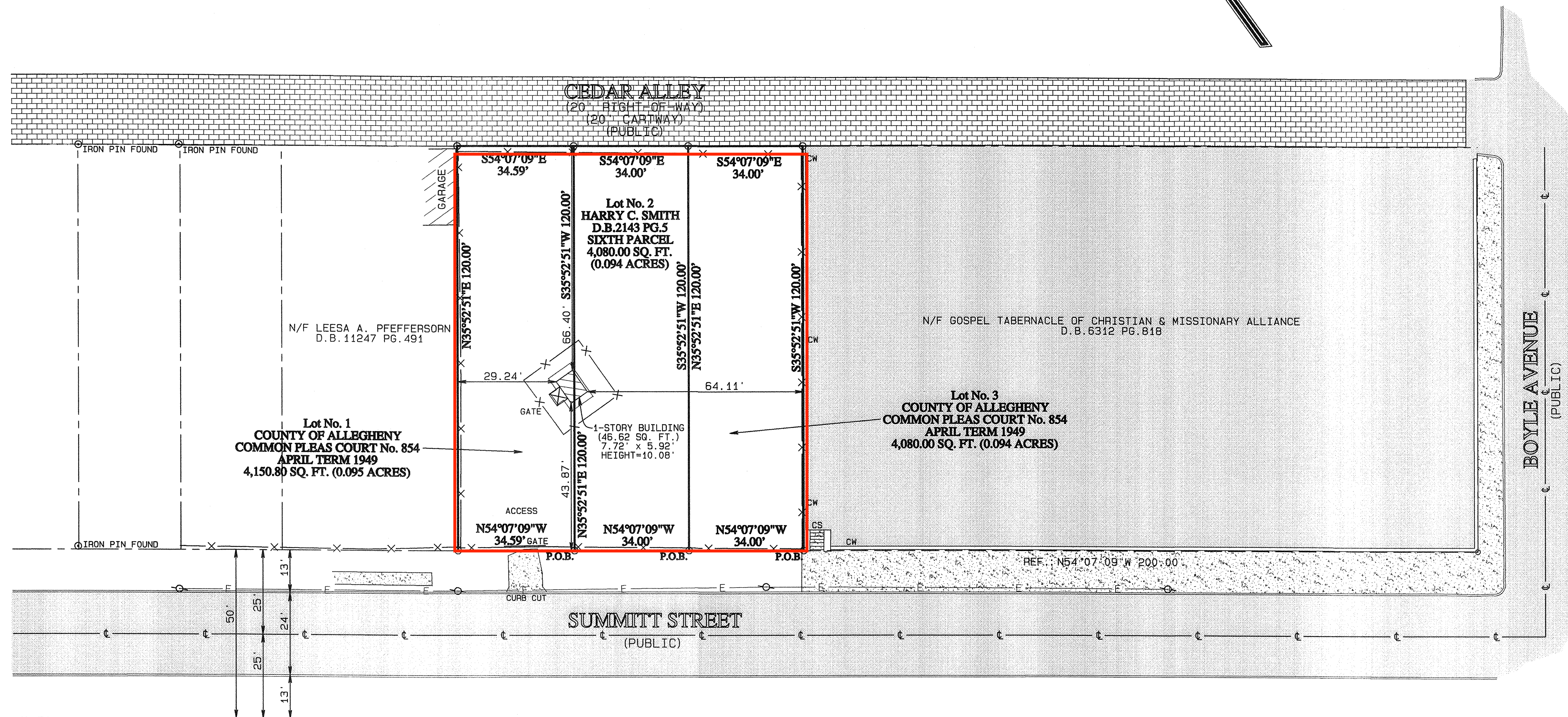


LOCATION PLAN



NOTES:

1. SURVEY MERIDIAN DERIVED FROM DEED AND FROM PREVIOUS PROPERTY SURVEYS.
2. BEARINGS DERIVED FROM PREVIOUS SURVEYS.
3. NOTICE: FROM INSPECTION ON THE SITE THERE ARE NO CEMETERIES OR BURIAL GROUNDS LOCATED WITHIN THE TRACT AREA.
4. THE SITE HAS ACCESS TO SUMMITT STREET.
5. STRICT MEASURE SURVEY MERIDIAN DERIVED FROM DEED AND FROM PREVIOUS PROPERTY SURVEYS.
6. BEARINGS DERIVED FROM THE PA STATE PLANE COORDINATE SYSTEM.
7. EQUIPMENT USED:
TRIMBLE ROBOTIC SURVEYING EQUIPMENT MODEL NO. 5600
LEICA VIVA GPS - GNSS/GLONASS MODEL GS15
AUTOMATIC COMPUTATIONS AND AUTOMATIC DRAFTING PREPARED USING LATEST HP DESKTOP MODELS
REPRODUCTION EQUIPMENT - SCAN/RASTERIZE/PRINT OCE C9400-II
8. ELEVATION BASE DATUM
KeyNet/Trimble VRS Network Solution computed using (GE0ID12A).
9. ELEVATION DATUM IS NAVD 1988.
10. ALL DISTANCES/MEASUREMENTS SHOWN HEREON ARE "U.S. SURVEY FEET".

SURVEYOR'S CERTIFICATION

I hereby certify to United States Government, U.S. Department of Transportation, Federal Aviation Administration and to all parties interested in title and their respective successors and assigns.

This is to certify that this map or plat and the survey on which it is based were made in accordance with the 2011 Minimum Standard Detail Requirements for ALTA/ACSM Land Title Surveys, jointly established and adopted by ALTA and NSPS. The field work was completed on December 8, 2015.

Date of Plat or Map: February 24, 2016

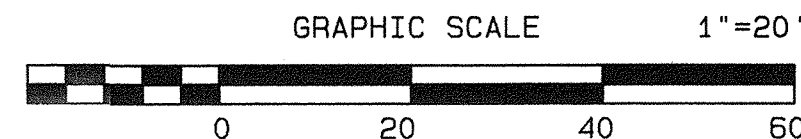
MERLYN J. JENKINS & ASSOCIATES, INC.

Merlyn J. Jenkins
Merlyn J. Jenkins
Registration No. 7784-E



LEGEND

- - Corner Monument (Iron Pin, except if noted)
- - Pole
- - Catch Basin
- ⊙ - Light Standard
- - Curbing
- - Fence
- E — - Overhead Electric Wire
- - Manhole
- - Cleanout
- - Fire Hydrant
- - Waterstop
- - Gas Valve
- - Electric Transformer Unit
- - Paved Area
- - Concrete Area
- - Brick Area
- - Building Area
- - Electric Meter
- - Gas Meter
- - Sign
- - Concrete Wall
- - Concrete Steps
- - Handicapped Parking
- - Centerline
- REF. — - Reference Course & Distance
- P.O.B. — - Point of Beginning



Rev'n. #1-2/24/16-CMP/MJJ-Revisions per review of client.

		UNITED STATES GOVERNMENT U.S. DEPARTMENT OF TRANSPORTATION FEDERAL AVIATION ADMINISTRATION OM (OUTER MARKER) FACILITY Summitt Street, McKeesport, PA	
		Merlyn J. Jenkins & Associates, Inc. ENGINEERS & SURVEYORS 412 West Market Street, Pottsville, PA 17901 Telephone: (570) 622-7708 Fax: (570) 622-1118 E-mail: mjj@sunlink.net	
DATE: 12/23/15		DWN.BY: TJJ	
SCALE: 1" = 20'		CHKD.BY: MJJ	
Situate in the City of McKeesport County of Allegheny, PA			
PLAN		DRAWING NO. SK-3346	