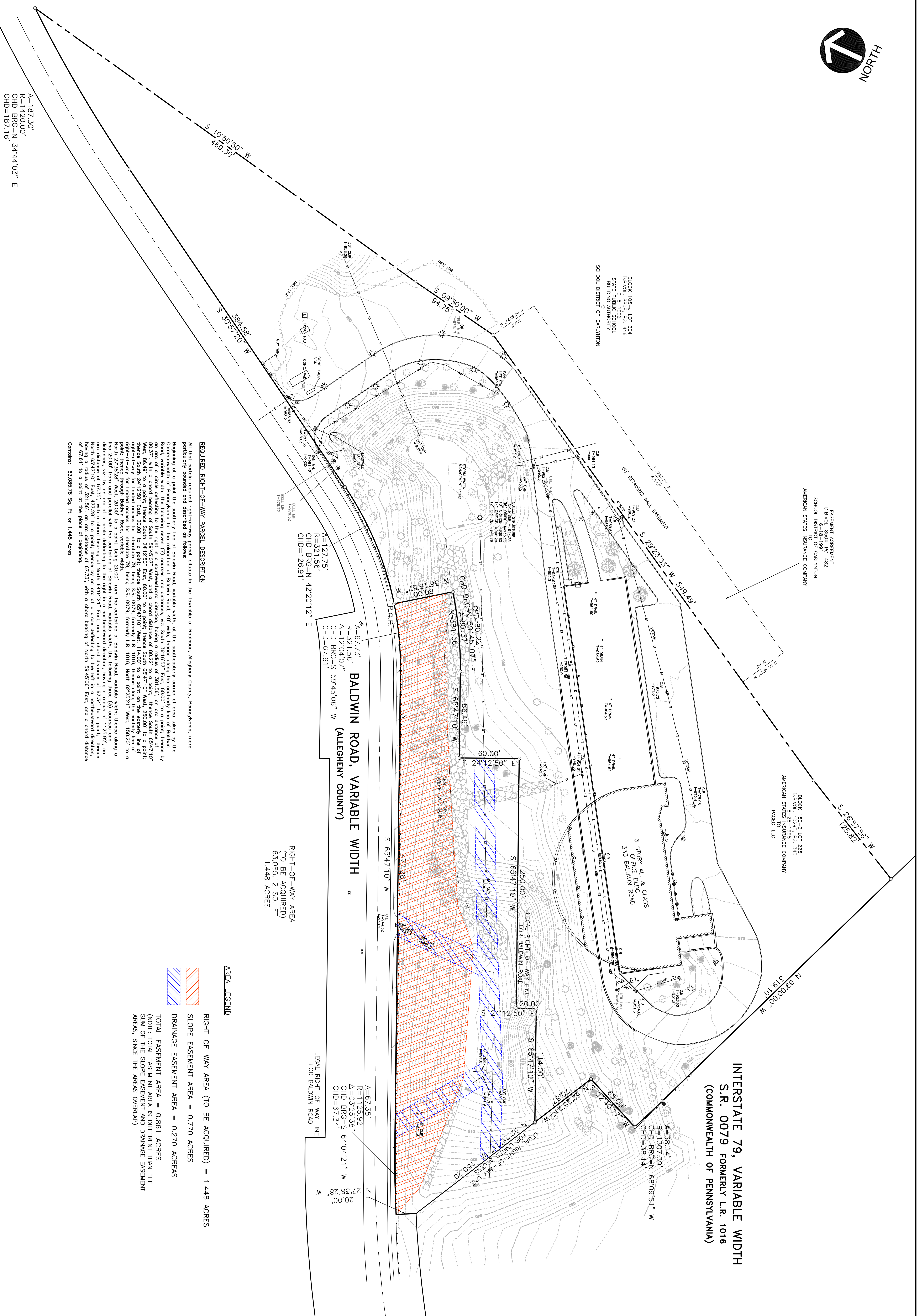


ESSENT ASSURANCE  
DAVOLI 8504, 50, 482  
SCHOOL DISTRICT OF CARAVANTON  
SCHOOL DISTRICT OF CARAVANTON  
AMERICAN STATES INSURANCE COMPANY

BLOCK 150-2 LOT 225  
DAVOLI 8504, 50, 482  
AMERICAN STATES INSURANCE COMPANY  
PACCIC LLC

INTERSTATE 79, VARIABLE WIDTH  
S.R. 0079 FORMERLY L.R. 1016  
(COMMONWEALTH OF PENNSYLVANIA)

BLOCK 108-4 LOT 204  
DAVOLI 8504, 50, 482  
SCHOOL DISTRICT OF CARAVANTON  
SCHOOL DISTRICT OF CARAVANTON

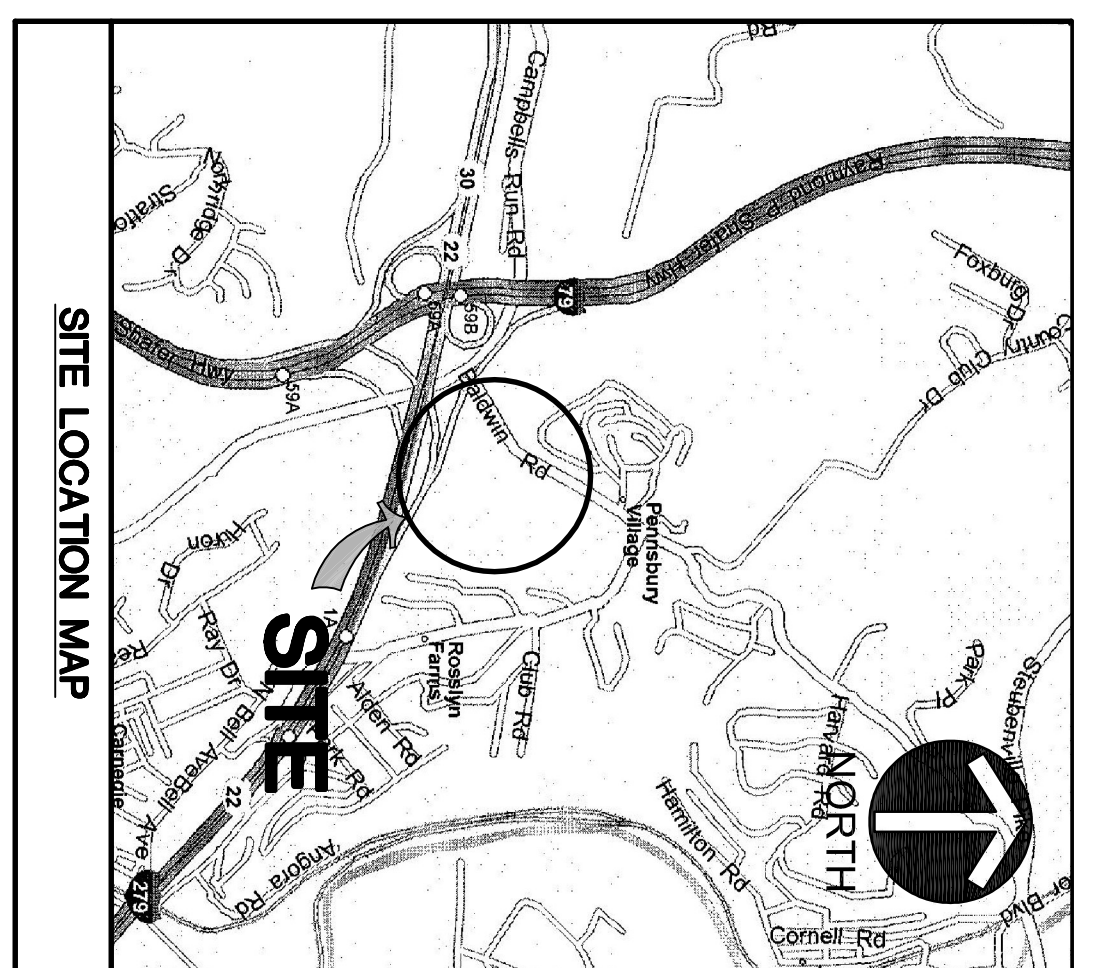


REQUIRED RIGHT-OF-WAY PARCEL DESCRIPTION  
Beginning at a point the southerly line of Baldwin Road, variable width, at the southeasterly corner of area taken by the Commonwealth of Pennsylvania for the relocation of Baldwin Road, 40' wide, thence along the southerly line of Baldwin Road, 40' wide, to a point on the southerly line of Baldwin Road, 40' wide, having a bearing of S 10°50'50\"/>

AREA LEGEND

|  |  |
|--|--|
|  | RIGHT-OF-WAY AREA (TO BE ACQUIRED) = 1.448 ACRES |
|  | SLOPE EASEMENT AREA = 0.770 ACRES                |
|  | DRAINAGE EASEMENT AREA = 0.270 ACRES             |
|  | TOTAL EASEMENT AREA = 0.861 ACRES                |

NOTE: TOTAL EASEMENT AREA IS DIFFERENT THAN THE AREA(S) SINCE THE AREAS OVERLAP



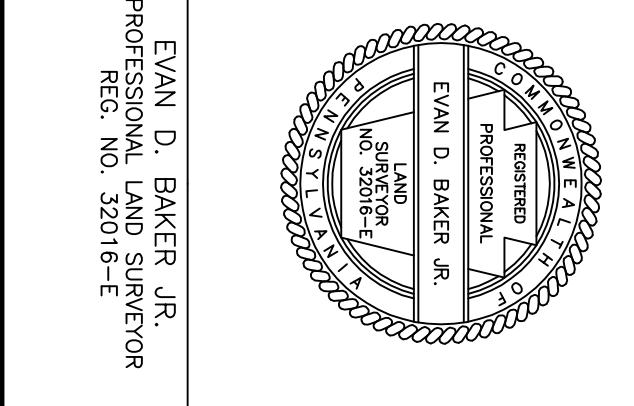
| DATE | REVISION RECORD | DESCRIPTION |
|------|-----------------|-------------|
|      |                 |             |
|      |                 |             |
|      |                 |             |

- LEGEND
- EXISTING CONTOUR
  - GUIDE RAIL
  - FENCE
  - TREE LINE
  - GAS LINE
  - OVERHEAD POWER LINE
  - SANITARY SEWER LINE
  - STORM SEWER LINE
  - UNDERGROUND TELEPHONE LINE
  - UNDERGROUND ELECTRIC LINE
  - WATER LINE
  - GAS BOX
  - GAS METER
  - GROUND LIGHT
  - ELECTRIC BOX
  - LIGHT STANDARD
  - TRAFFIC POLE
  - UTILITY POLE
  - WATER BOX
  - WATER METER
  - CITY TYPE INLET
  - CATCH BASIN
  - SANITARY MANHOLE
  - STORM MANHOLE
  - UTILITY MANHOLE
  - VALVE BOX
  - MARKER
  - TREE
  - FIRE HYDRANT
  - PARKING METER
  - SIEN
  - TEST PIP/POLE
  - TEST SPONGE
  - PERC HOLE
  - BENCHMARK
  - IRON PIV/REBAR
  - MANHOLES
  - MANHOLES
  - TOP/BOTTOM OF CURB
  - TOP/BOTTOM OF STEP
  - TOP/BOTTOM OF WALL
  - DOOR/SILL

SCALE IN FEET  
0 40 80

TOTAL PLAN AREA  
252,304.91 SQ. FT.  
5,792.1 ACRES

PA ONE CALL SERIAL NO. 0555509  
PENNSYLVANIA ACT 38 (1991) REQUIRES NO LESS THAN 3 WORKING DAYS NOTICE FOR ANY  
REQUESTS IN THE STATE OF PENNSYLVANIA. CALL TOLL FREE 1-800-242-1775 FOR LOCATION  
MUST BE CONSIDERED AN APPROPRIATE OTHER UNDERGROUND UTILITIES MAY EXIST WHICH ARE NOT  
SHOWN. IT WILL BE THE CONTRACTOR'S RESPONSIBILITY TO ASCERTAIN ALL PHYSICAL LOCATIONS  
HOLD THE SUPPLIER RESPONSIBLE FOR ANY UTILITY LOCATION SHOWN ON THIS PLAN.



**Civil & Environmental Consultants, Inc.**  
15205  
Pittsburgh, PA 15205  
(412) 429-2324 • (800) 365-2324  
Chicago, IL • Cincinnati, OH • Columbus, OH • Indianapolis, IN • Nashville, TN • St. Louis, MO

REQUIRED AREA EXHIBIT  
PLAN OF PROPERTY

ROBINSON TOWNSHIP  
ALLEGHENY COUNTY, PENNSYLVANIA

Made for  
**PACCIC, LLC**

DATE: 3/18/2005 SCALE: 1"=40' SHEET 1 OF 1  
DWN BY: EDB APPROVED BY: DRAWING NUMBER  
CHKD. BY: EDB 050-364