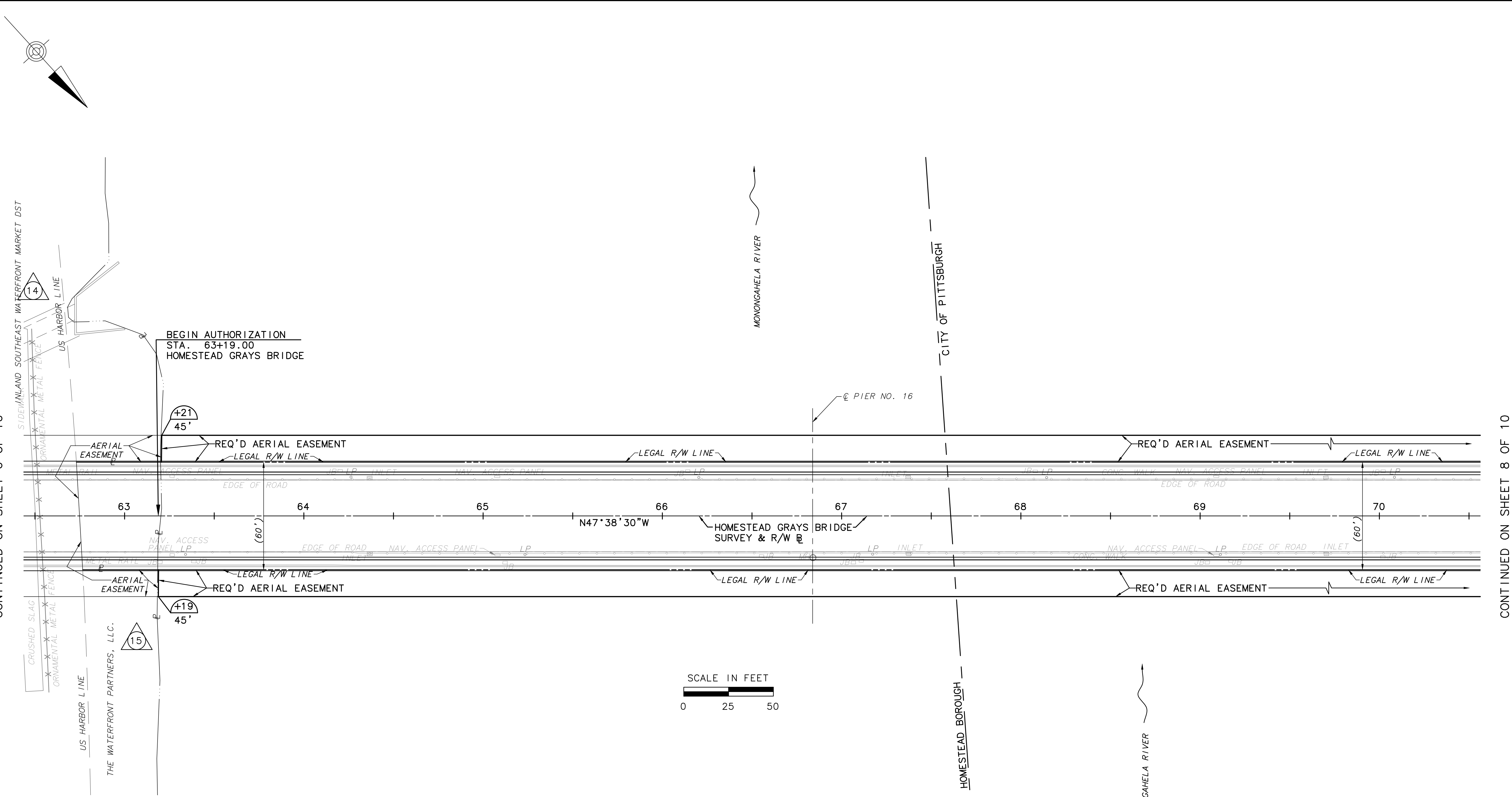


CONTINUED ON SHEET 6 OF 10

PLOT DATE: 03-25-04 FILE NAME: H:\S\25965\25965-10.dwg



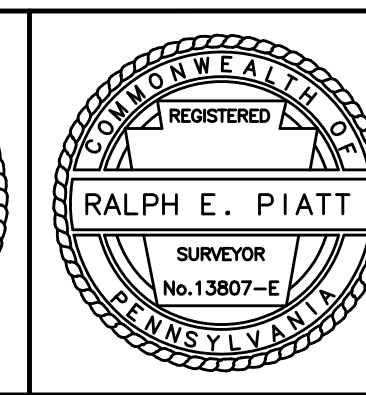
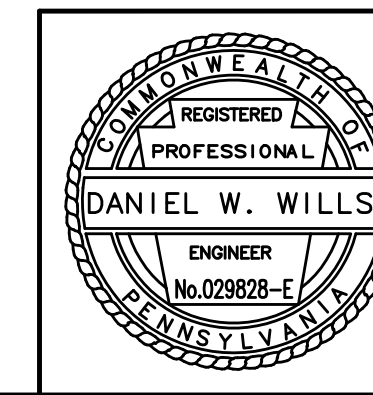
CONTINUED ON SHEET 8 OF 10

ALL PROPERTIES ARE PLOTTED FROM DEEDS OF RECORD, RECORDED SUBDIVISION OR LOT PLANS, OR FROM FIELD SURVEY. PROPERTY LINES WERE SURVEYED ONLY WHEN DETERMINED NECESSARY BY THE PROFESSIONAL LAND SURVEYOR RESPONSIBLE FOR THE PROJECT. PROPERTY LINES NOT ESTABLISHED BY FIELD SURVEY WERE PLOTTED BASED ON EXISTING TOPOGRAPHICAL FEATURES AND LIMITED FIELD DATA.

THIS PLAN IS NOT TO BE SUBSTITUTED FOR A BOUNDARY SURVEY

FOR AERIAL EASEMENT DEFINITION SEE SHEET 3 OF 10

FOR TABULATION OF PROPERTIES SEE SHEET 10 OF 10



REVISIONS

County of Allegheny
Pittsburgh, Pennsylvania
Department of Public Works

RIGHT-OF-WAY
PLAN
HOMESTEAD GRAYS BRIDGE
MA12 - 3513

DRAWN BY: DSH/BPP	CHECKED BY: REP	CADD FILE: 2047PLA04.DWG	25965-RW
DATE: 03-25-04	SCALE: AS SHOWN	SHEET 7 OF 10	