

ALL PROPERTIES ARE PLOTTED FROM DEEDS OF RECORD, RECORDED SUBDIVISION OR LOT PLANS, OR FROM FIELD SURVEY. PROPERTY LINES WERE SURVEYED ONLY WHEN DETERMINED NECESSARY BY THE PROFESSIONAL LAND SURVEYOR RESPONSIBLE FOR THE PROJECT. PROPERTY LINES NOT ESTABLISHED BY FIELD SURVEY WERE PLOTTED BASED ON EXISTING TOPOGRAPHICAL FEATURES AND LIMITED FIELD DATA.

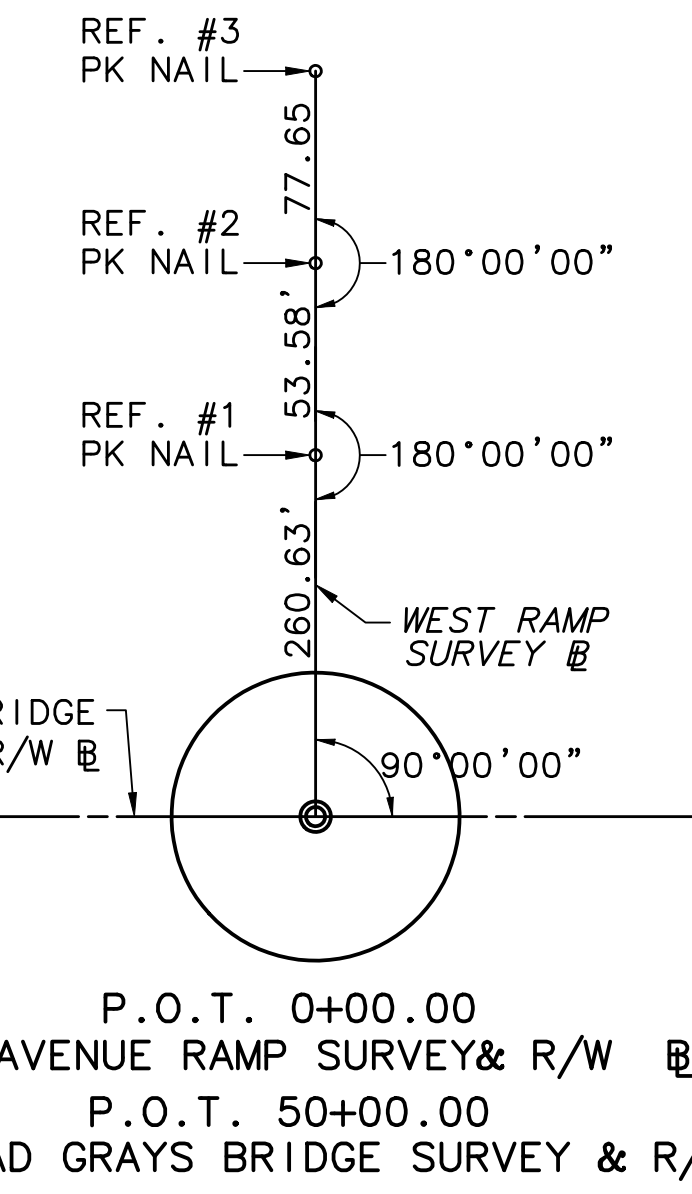
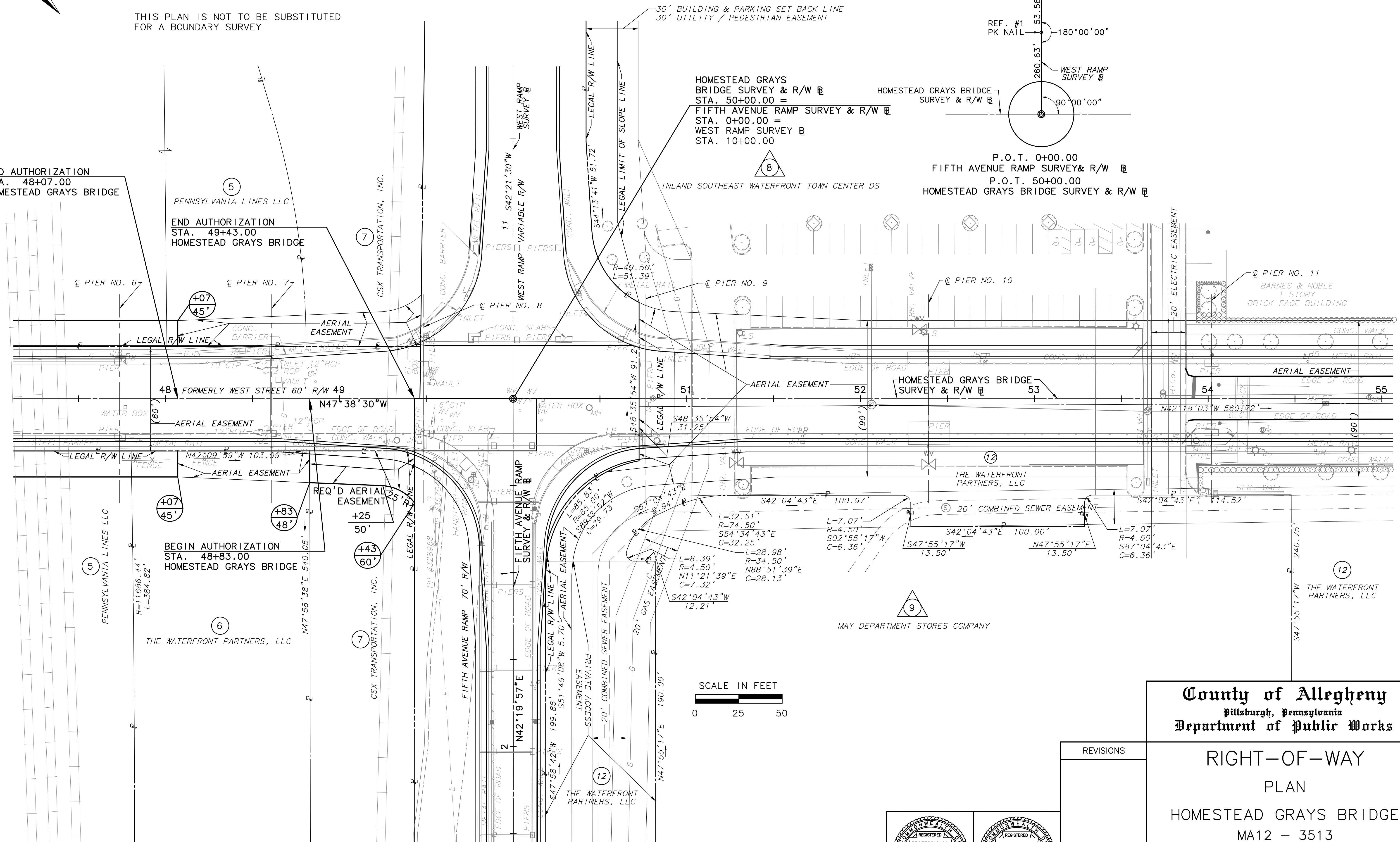
THIS PLAN IS NOT TO BE SUBSTITUTED FOR A BOUNDARY SURVEY

END AUTHORIZATION  
STA. 48+07.00  
HOMESTEAD GRAYS BRIDGE

END AUTHORIZATION  
STA. 49+43.00  
HOMESTEAD GRAYS BRIDGE

BEGIN AUTHORIZATION  
STA. 48+83.00  
HOMESTEAD GRAYS BRIDGE

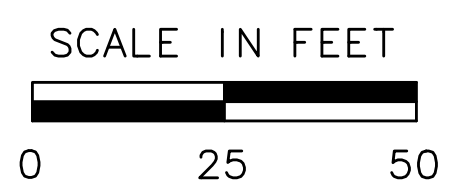
CONTINUED ON SHEET 4 OF 10



HOMESTEAD GRAYS  
BRIDGE SURVEY & R/W  
STA. 50+00.00 =  
FIFTH AVENUE RAMP SURVEY & R/W  
STA. 0+00.00 =  
WEST RAMP SURVEY  
STA. 10+00.00

INLAND SOUTHEAST WATERFRONT TOWN CENTER DS

HOMESTEAD GRAYS BRIDGE  
SURVEY & R/W  
P.O.T. 0+00.00  
FIFTH AVENUE RAMP SURVEY & R/W  
P.O.T. 50+00.00  
HOMESTEAD GRAYS BRIDGE SURVEY & R/W



CONTINUED ON SHEET 6 OF 10

CONTINUED ON SHEET 9 OF 10

FOR AERIAL EASEMENT DEFINITION SEE SHEET 3 OF 10

FOR TABULATION OF PROPERTIES SEE SHEET 10 OF 10

**County of Allegheny**  
Pittsburgh, Pennsylvania  
Department of Public Works

RIGHT-OF-WAY  
PLAN  
HOMESTEAD GRAYS BRIDGE  
MA12 - 3513

REVISIONS

DANIEL W. WILLS  
ENGINEER  
No. 029828-E

RALPH E. PIATT  
SURVEYOR  
No. 13807-E

DRAWN BY: DSH/BPP	CHECKED BY: REP	CADD FILE: 2047PLA02.DWG	25965-RW
DATE: 03-25-04	SCALE: AS SHOWN	SHEET 5 OF 10	