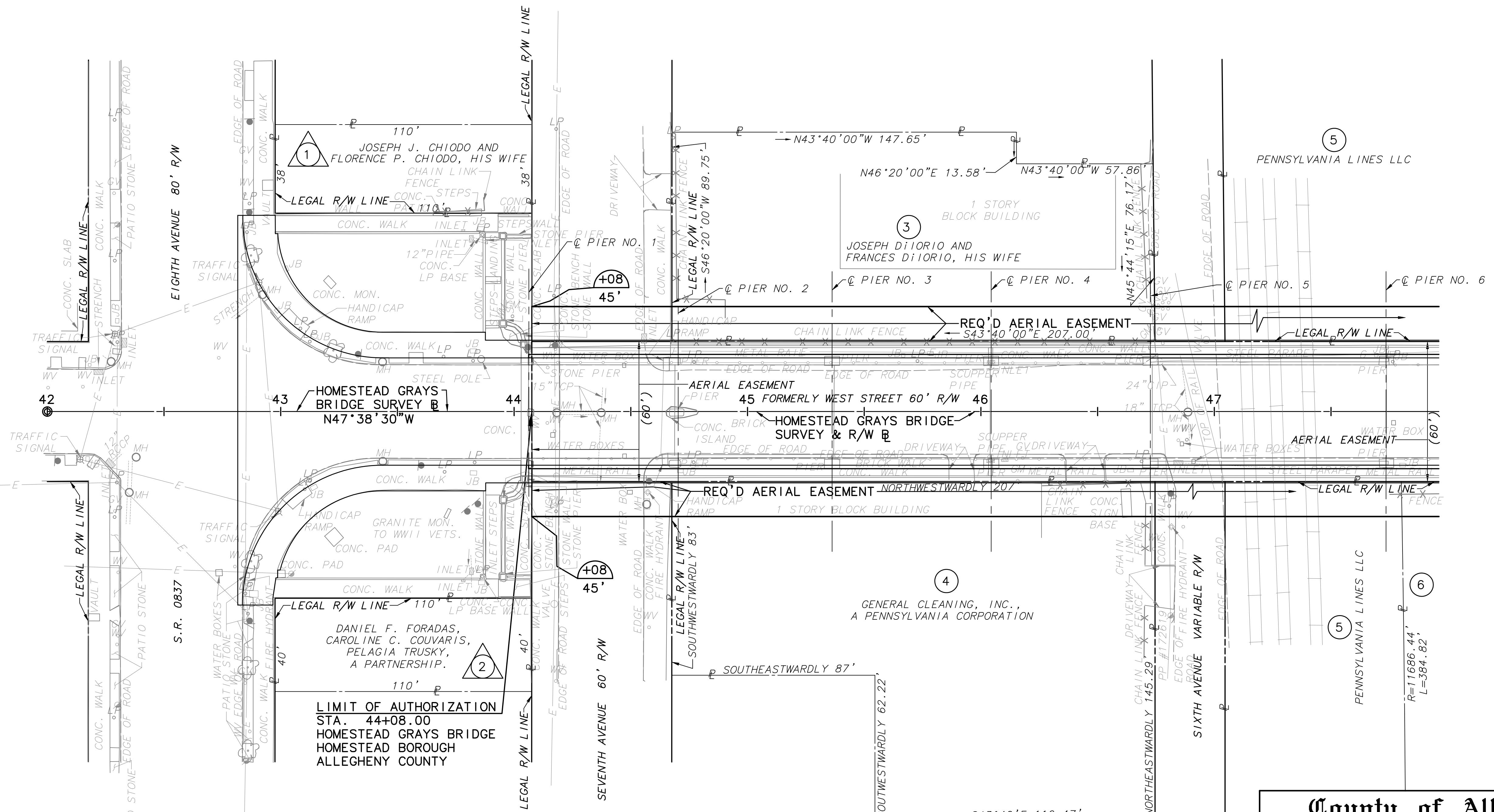
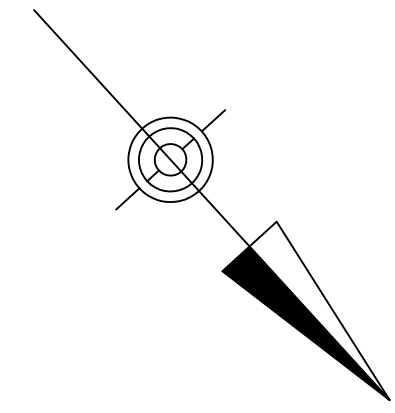


BM - Elev. 781.47'  
Homestead Grays Bridge Survey & R/W @  
Sta. 42+12 Offset 35', Lt.  
Square Cut NW Corner of Conc. Pad of R.R. Car  
Monument of U.S. Steel

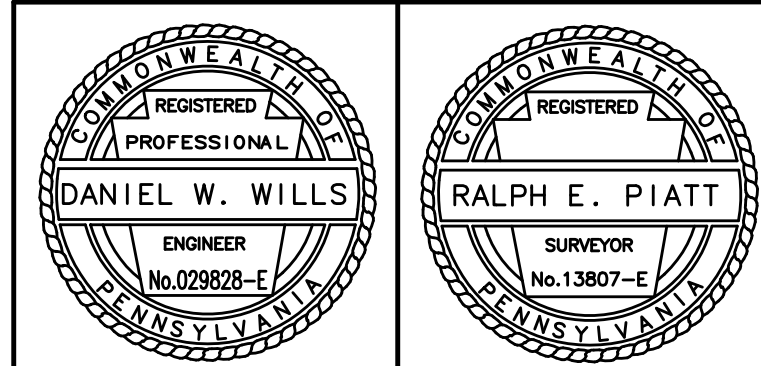


ALL PROPERTIES ARE PLOTTED FROM DEEDS OF RECORD, RECORDED SUBDIVISION OR LOT PLANS, OR FROM FIELD SURVEY. PROPERTY LINES WERE SURVEYED ONLY WHEN DETERMINED NECESSARY BY THE PROFESSIONAL LAND SURVEYOR RESPONSIBLE FOR THE PROJECT. PROPERTY LINES NOT ESTABLISHED BY FIELD SURVEY WERE PLOTTED BASED ON EXISTING TOPOGRAPHICAL FEATURES AND LIMITED FIELD DATA.

THIS PLAN IS NOT TO BE SUBSTITUTED FOR A BOUNDARY SURVEY

FOR AERIAL EASEMENT DEFINITION SEE SHEET 3 OF 10

FOR TABULATION OF PROPERTIES SEE SHEET 10 OF 10



County of Allegheny  
Pittsburgh, Pennsylvania  
Department of Public Works

RIGHT-OF-WAY  
PLAN  
HOMESTEAD GRAYS BRIDGE  
MA12 - 3513

REVISIONS

DRAWN BY: DSH/BPP	CHECKED BY: REP	CADD FILE: 2047PLA01.DWG	25965-RW
DATE: 03-25-04	SCALE: AS SHOWN	SHEET 4 OF 10	

CONTINUED ON SHEET 5 OF 10