

NOTE:
 1. ALL DEEDS OR PLAN BEARINGS AND COORDINATES HAVE BEEN ROTATED AND CONVERTED TO PA STATE PLANE COORDINATE SYSTEM SOUTH ZONE, NORTH AMERICAN DATUM OF 1983. BEARINGS HAVE BEEN ROTATED 1°48'36" COUNTERCLOCKWISE FROM THE BEARINGS PROVIDED ON THE T.J. INGRAM PLAN OF LOTS, (P.B.VOL. 34, PAGES 106-107) RECORDED IN ALLEGHENY COUNTY DEPARTMENT OF REAL ESTATE.

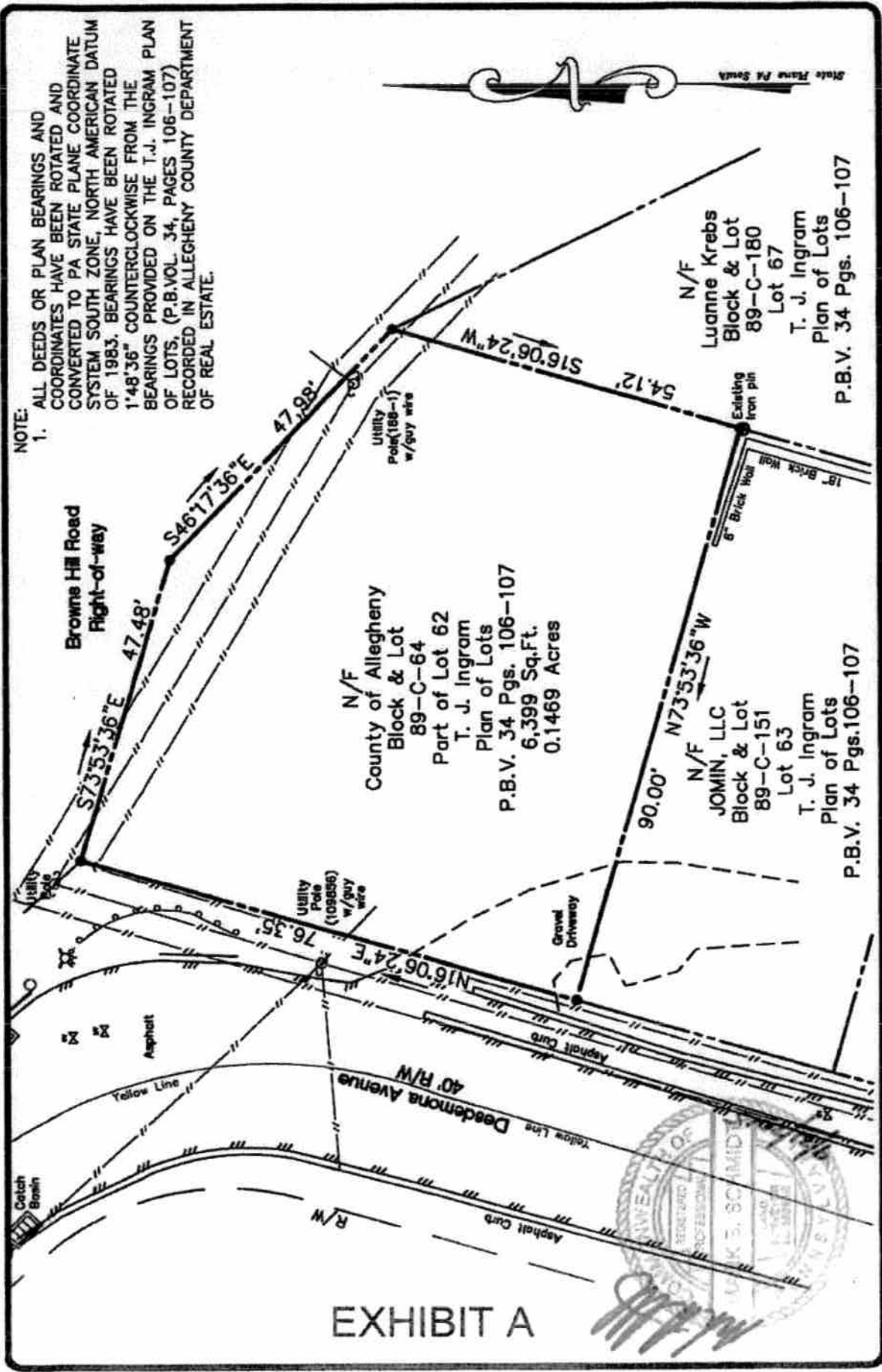


EXHIBIT A

HAMPTON
 TECHNICAL ASSOCIATES, INC.
 ENGINEERING LAND SURVEYORS
 ESTABLISHED 1960

ETNA TECHNICAL CENTER
 35 WILSON STREET, #201
 PITTSBURGH, PA 15223
 PHONE: (412) 781-9860
 FAX: (412) 781-3504
 www.hampton-technical.com
 E-MAIL: email@hampton-technical.com

CLIENT: Joel Kranich Architects, PC
PLAN: Plan of Property Block & Lot 89-C-64
 Lot 62 T.J. Plan of Lots P.B.V. 34 Pgs. 106-107
LOCATION: 15th Ward City of Pittsburgh
 Allegheny County, PA

SCALE: 1"=20'	DRAWN: 6-24-15	CAD FILE: 15-11875.dwg	AREA: 15-11876	REVISED: 9-18-2015 BY DKL	ARRAY BY: DKL	CHECKED BY: MBS
---------------	----------------	------------------------	----------------	---------------------------	---------------	-----------------