



**FIGURE 2  
SITE PLAN**

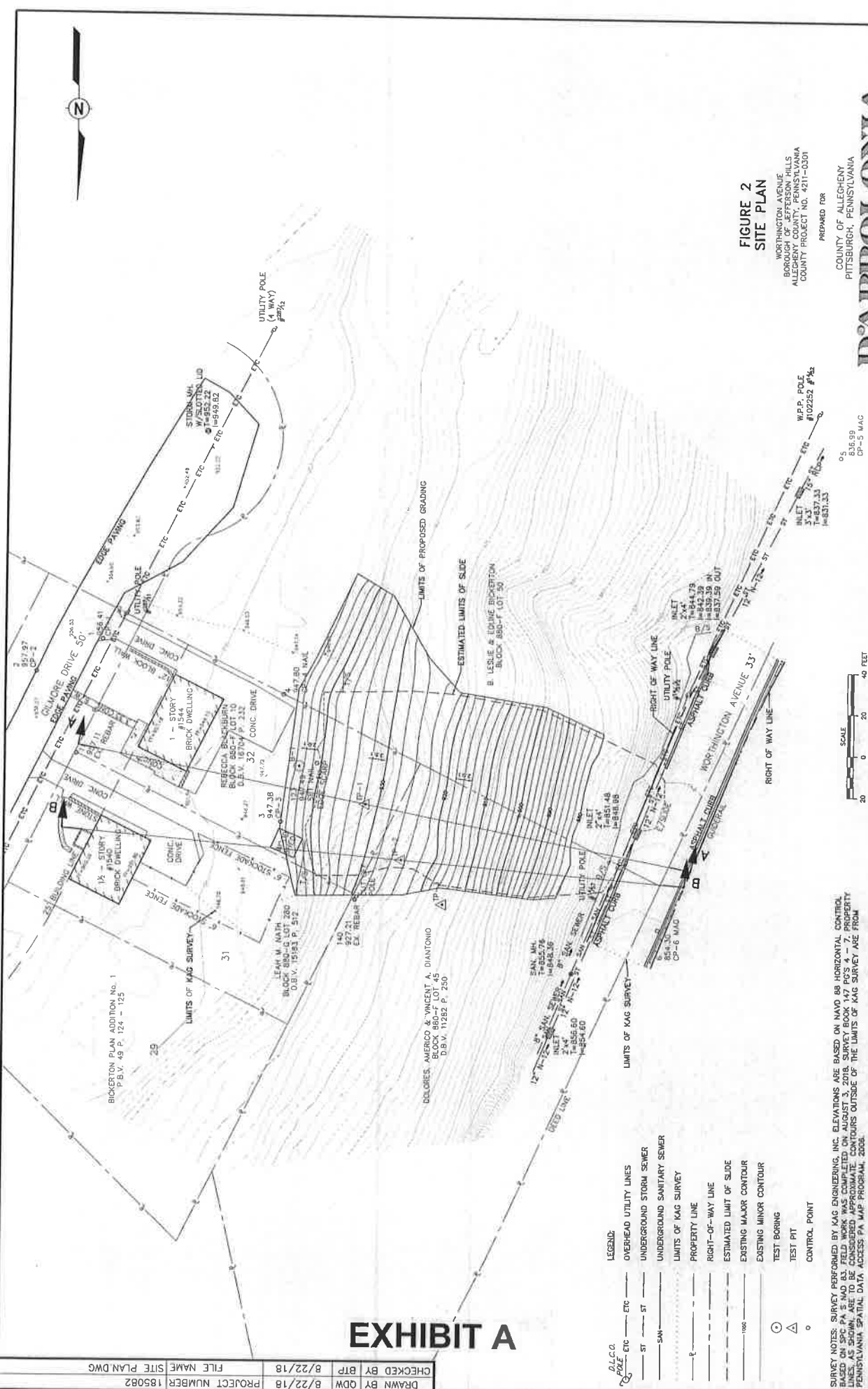
WORTHINGTON AVENUE  
BOROUGH OF JEFFERSON HILLS  
ALLEGHENY COUNTY, PENNSYLVANIA  
COUNTY PROJECT NO. 4211-0301

PREPARED FOR

COUNTY OF ALLEGHENY  
PITTSBURGH, PENNSYLVANIA

**D'APPOLONIA**

05/25/20  
CP-3 MAC



**EXHIBIT A**

- LEGEND:**
- DLCCO POLE ETC ETC
  - OVERHEAD UTILITY LINES
  - UNDERGROUND STORM SEWER
  - UNDERGROUND SANITARY SEWER
  - LIMITS OF KAG SURVEY
  - PROPERTY LINE
  - RIGHT-OF-WAY LINE
  - ESTIMATED LIMIT OF SLIDE
  - EXISTING MAJOR CONTOUR
  - EXISTING MINOR CONTOUR
  - TEST BORING
  - TEST PIT
  - CONTROL POINT

SURVEY NOTES: SURVEY PERFORMED BY KAG ENGINEERING, INC. ELEVATIONS ARE BASED ON NAVD 88 HORIZONTAL CONTROL BASED ON SPC PA 5-MD 83. FIELD WORK WAS COMPLETED ON AUGUST 3, 2018. SURVEY BOOK 147 PGS 4 - 7. PROPERTY BOUNDARIES AND UTILITIES SHOWN ARE BASED ON RECORD PLANS AND FIELD SURVEY DATA. ACCESS TO PROPERTY ARE FROM PENNSYLVANIA SPATIAL DATA ACCESS MAP PROGRAM, 2008.

DRAWN BY	OW	8/22/18	PROJECT NUMBER	185082
CHECKED BY	BTP	8/22/18	FILE NAME	SITE PLAN.DWG